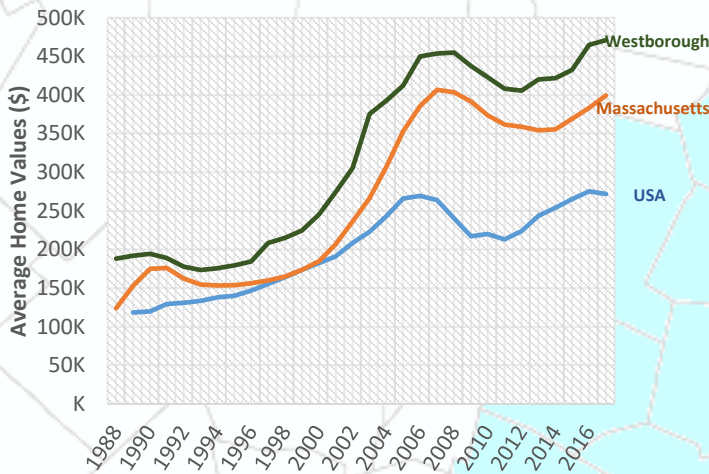
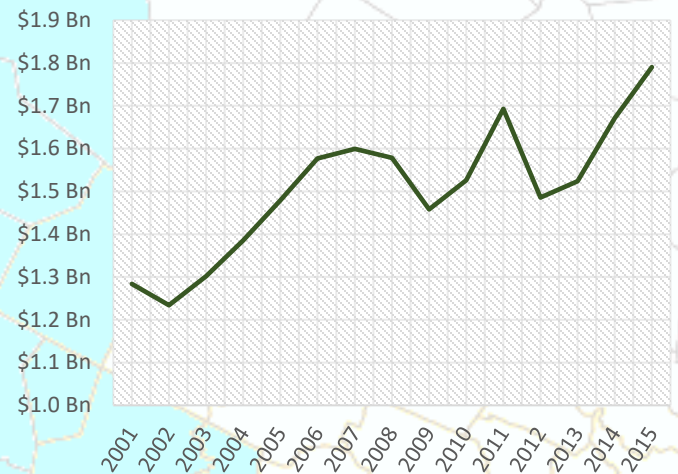


Rising Home Values



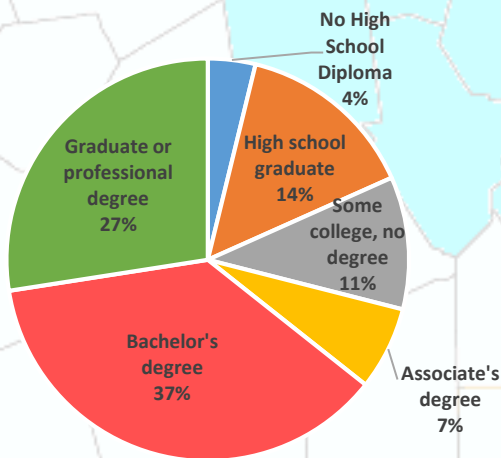
Beyond the year to year averages, in February 2017, the median single family home in Westborough sold for \$560,000¹. This is higher than the state median for the same month which was \$319,000¹, and the national median of \$228,200².

Increasing Payroll



From Q2 2015 to Q2 2016, the payroll for all places of employment in Westborough was \$1,819,268,535.³ As the town has recovered from the recession the payroll has increased significantly in the last few years.

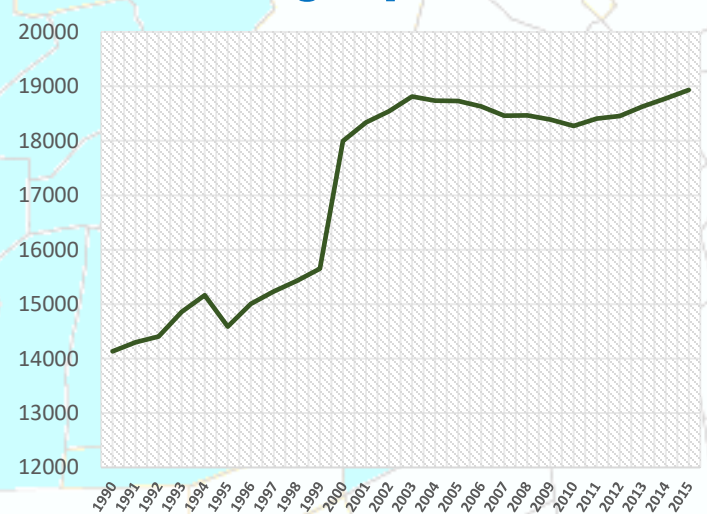
Highly Educated



2011-2015 ACS (U.S. Census Bureau)

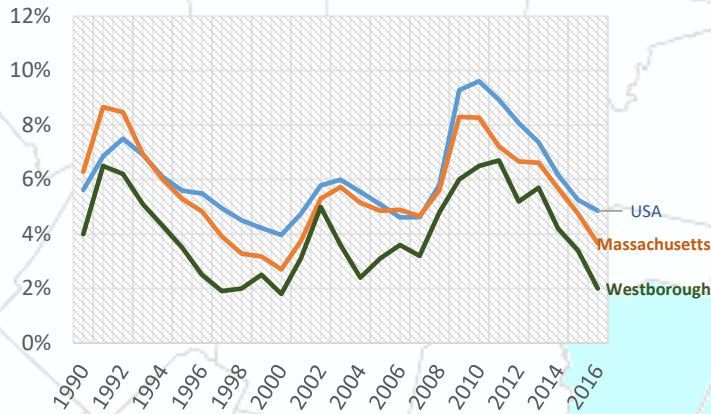
Westborough has a highly educated population compared to the state and to the nation with 64% of residents having a bachelor's degree or higher. During the same time 40.5% of people in Massachusetts had a bachelor's degree or higher, while only 29.8% of all people in the U.S. had one.⁴

Growing Population

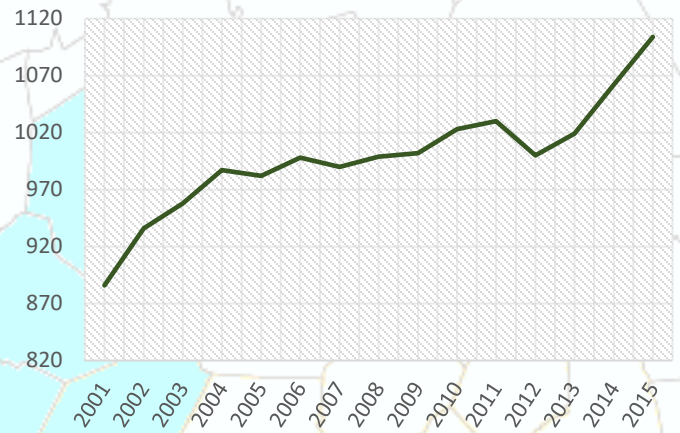


The population of Westborough has been increasing slowly. In 2000, the population of Westborough was 17,997 this increased to 18,272 by 2010, and in 2015, the population of Westborough was estimated to be approximately 18,934.⁵

Low Unemployment



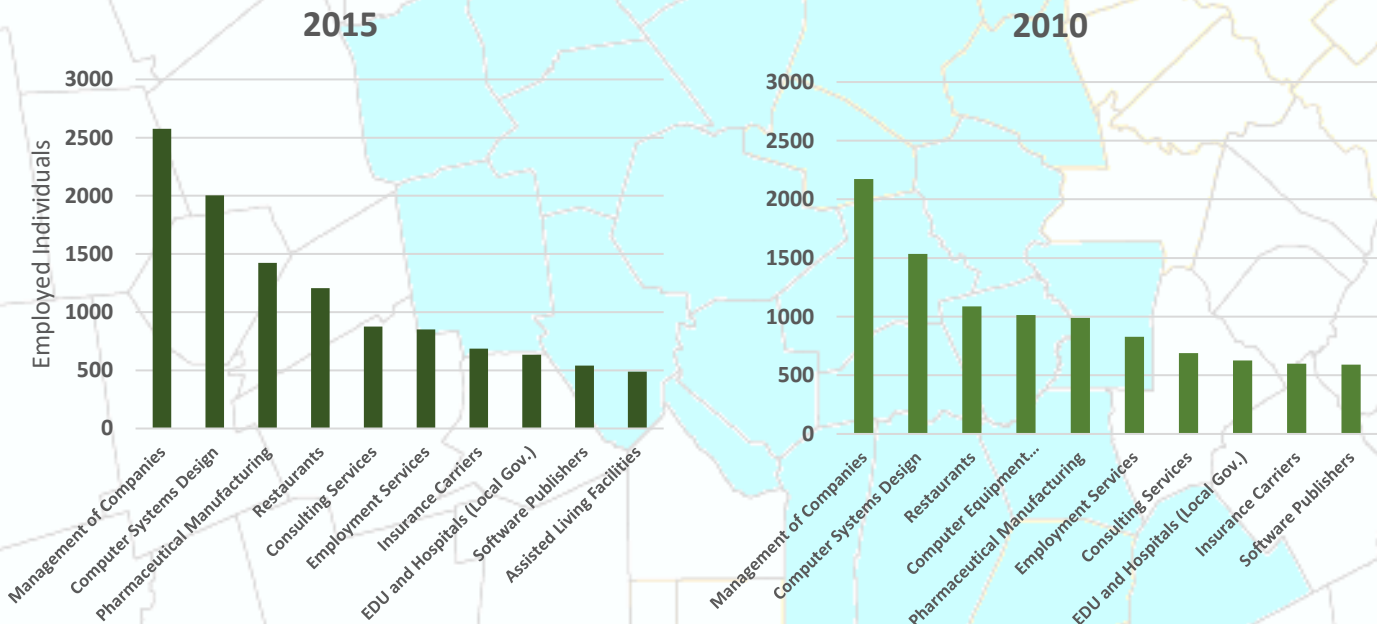
Expanding Employers



Beyond the year to year averages, in February 2017, the unemployment rate in Westborough was 3.0%. This is lower than the state and 495/MetroWest regional unemployment rates, which were both 3.4%, and much lower than the national unemployment rate of 4.8%³

The number of employers in Westborough has been increasing at a steady rate for the 495/MetroWest Region. In 2001, there were 886 employers in the town, and by Q2 2016 this number had increased to 1,115.³

Top Ten Industries In Westborough



Top Ten Industries data and analysis conducted by the Public Policy Center at UMass Dartmouth for the 495/MetroWest Partnership in support of the 495/MW Suburban Edge Community Commission utilizing 2014 US Census Bureau Local Employment Dynamics. For more information on these data sets please visit <http://lehd.ces.census.gov/>

Sources:

- Mass.gov Municipal Databank <http://www.mass.gov/dor/local-officials/municipal-databank-and-local-aid-unit/databank-reports-new.html> (Line graph municipal data)
 1. The Warren Group <http://www.twgstats.com/tssub/start.asp> 2. Ycharts Average US Home Values https://ycharts.com/indicators/sales_price_of_existing_homes
 3. Mass.gov Labor and Workforce Development <http://www.mass.gov/lwd/economic-data/> 4. US Census Bureau <https://www.census.gov/> 5. UMASS Donahue Institute <http://www.donahue.umassp.edu/news-events/institute-news/new-population-estimates-for-mass-released-interactive-map-available>